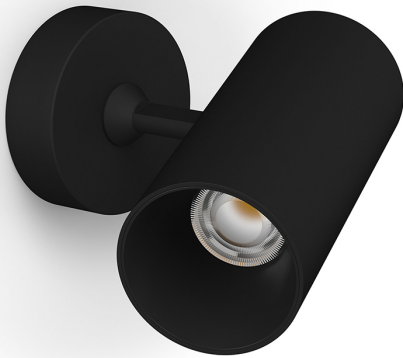


TUBA II SURFACE

Inlite



MOUNTING TYPE

Surface

SIZE

Ø63 x 160mm H

CUT OUT

185mm x 90mm

DIMMING

Phase Dim

LUMEN RANGE

860lm

WATTAGE

12w

INTEGRAL DRIVER

Integral

BEAM ANGLE

IP RATING

IP20

COLOUR TEMP

3000k

CRI

95

COLOUR

Matt Black / Matt White

